

## 10.0 Installation & Specifications

### 10.3 MOUNTING USING OPTIONAL ISOLATION MOUNTING KIT #1498, 1499 or 1500.

The intent of the Isolation mounting kit is to reduce vibration transmitted by the engine through the frame to the railcar structure. This is accomplished by installing a set of (4) rubber mounts at the corners of the generator enclosure. Since the enclosure is mounted on rubber it will be able to move with vibration as well as when coupling the railcars together. For this reason all attaching parts such as fuel lines, exhaust system, wiring etc. **can not** be rigidly attached when making your connections. Make sure these connections are installed with sections of flexible material as required. The following installation instructions will refer to **Figure 10.3.1 & 10.3.2.**

Before beginning installation read **Section 10.1 General Mounting Instructions.**

Begin by determining distance "A" on chart **Figure 10.3.1.** After distance "A" is determined, you will need to decide what support members are going to be used to carry the generator set. The generator set is carried by attaching to (4) brackets **Item #2, Figure 10.3.1.** Be sure to provide support members with ample strength to withstand and maintain structural integrity under the impact of coupling railcars and stresses of railroad travel. If welding to the railcar structure, have a certified welder perform the installation. If you are fastening the support members by means of bolting, use Grade 8 hardware or better. When installing, be sure the mounting surfaces of the support members are parallel and level. The holes for attaching to bracket **Item #2** can be drilled according to layout shown in **Figure 10.3.1.**

After the carrying members are securely attached to the railcar structure assembly of the mounting kit can begin.

#### **The following instructions refer to Figure 10.3.2.**

First, attach mounting brackets **Item #1** to the generator endplate. Make sure the mounting brackets are parallel with each other and with the top of the generator enclosure. This will help ensure a level mounting when installed on the railcar. Use Grade 8 hardware (provided) **Item #7, Item #8 & Item #9**, 6 places each bracket. Tighten securely.

**Note:** A chart of general tightening specs for different grade hardware is shown in **Figure 10.7.2.**

Second, place isolation mounts **Item #10** onto brackets **Item #2** and secure with Grade 8 hardware (provided) **Item #7, Item #8 & Item #9**, 2 places each mount. Tighten securely.

Next, align bracket **Item #2** with 13/16" dia. hole in bracket **Item #1**. Place washer **Item #4** on 3/4-10 Grade 8 bolt **Item #3**. Insert bolt through bracket **Item #1** and rubber mount **Item #10** and secure by placing snubber washer **Item #5** and locknut **Item #6** onto bolt **Item #3**. Thread locknut onto bolt only to locking section of the nut. This will allow you to align the brackets more easily with the main carrier members.

Repeat for remaining (3) brackets.

After the brackets are assembled, the unit is ready to be mounted and fastened to the railcar structure.

Lift the genset enclosure into the designed position and attach to the railcar using Grade 8 bolts & locknuts (not provided). Each bracket **Item #2** is designed to be attached using (6) 1/2" diameter bolts. Tighten securely.

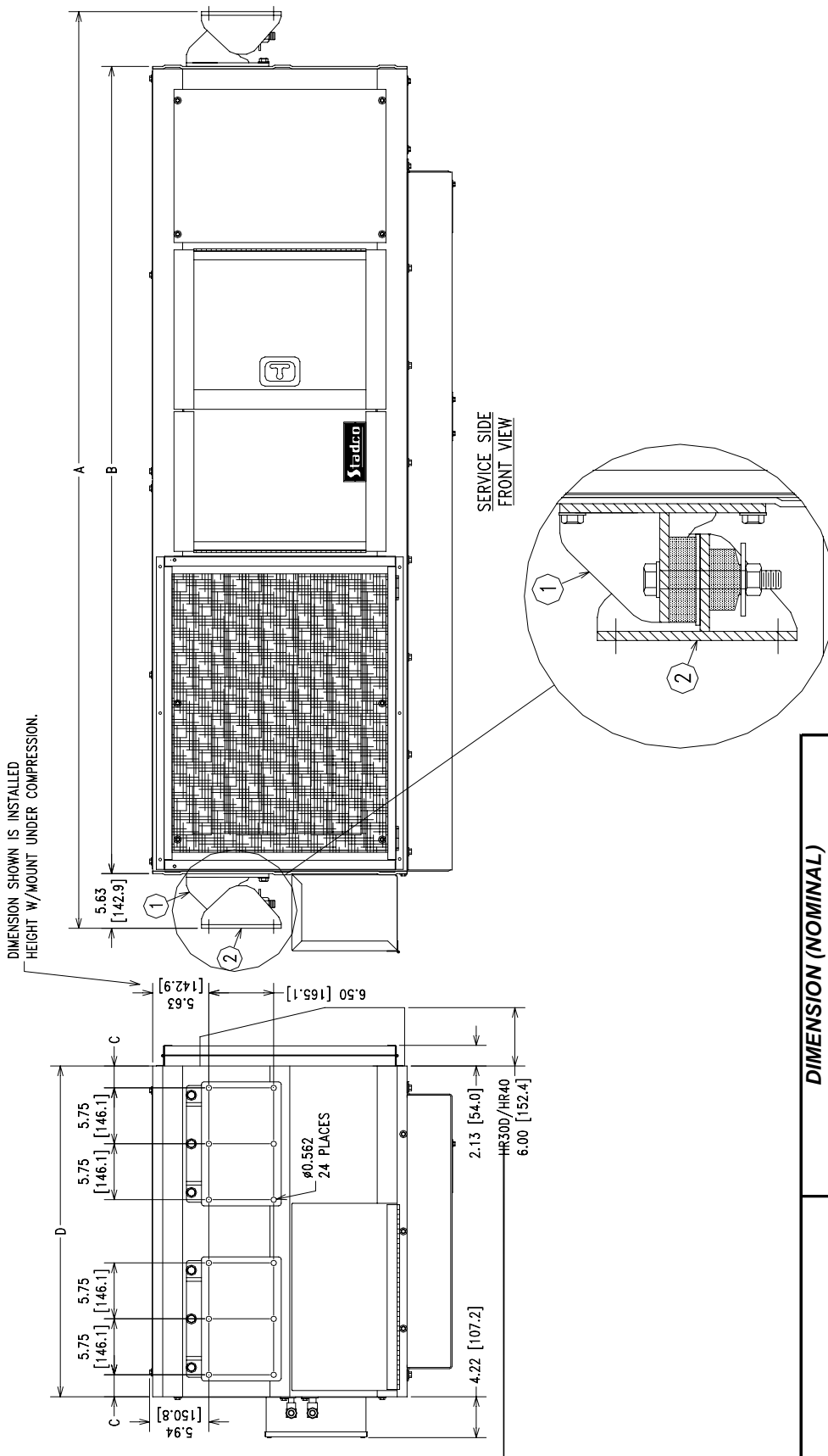
Make sure that all mounts are equally loaded when in the installed position. This will provide the best isolation from vibration and also will prevent overloading of one mount. To check equal load, keep center bolts **Item #3** loose. Lift one end of the generator enclosure until brackets **Item #1** do not make contact with rubber mount **Item #10**. Next, slowly lower down until either bracket **Item #1** contacts the rubber mount. Adjust brackets as needed to correctly align. Repeat this process for the opposite end.

When the genset is positioned and properly aligned, tighten (4) locknuts **Item #6** onto bolts **Item #3**.

Before completing, recheck all fastening hardware for tightness.

# Isolation Mounting Kit

Figure 10.3.1 - Isolation Kit Mounting Details



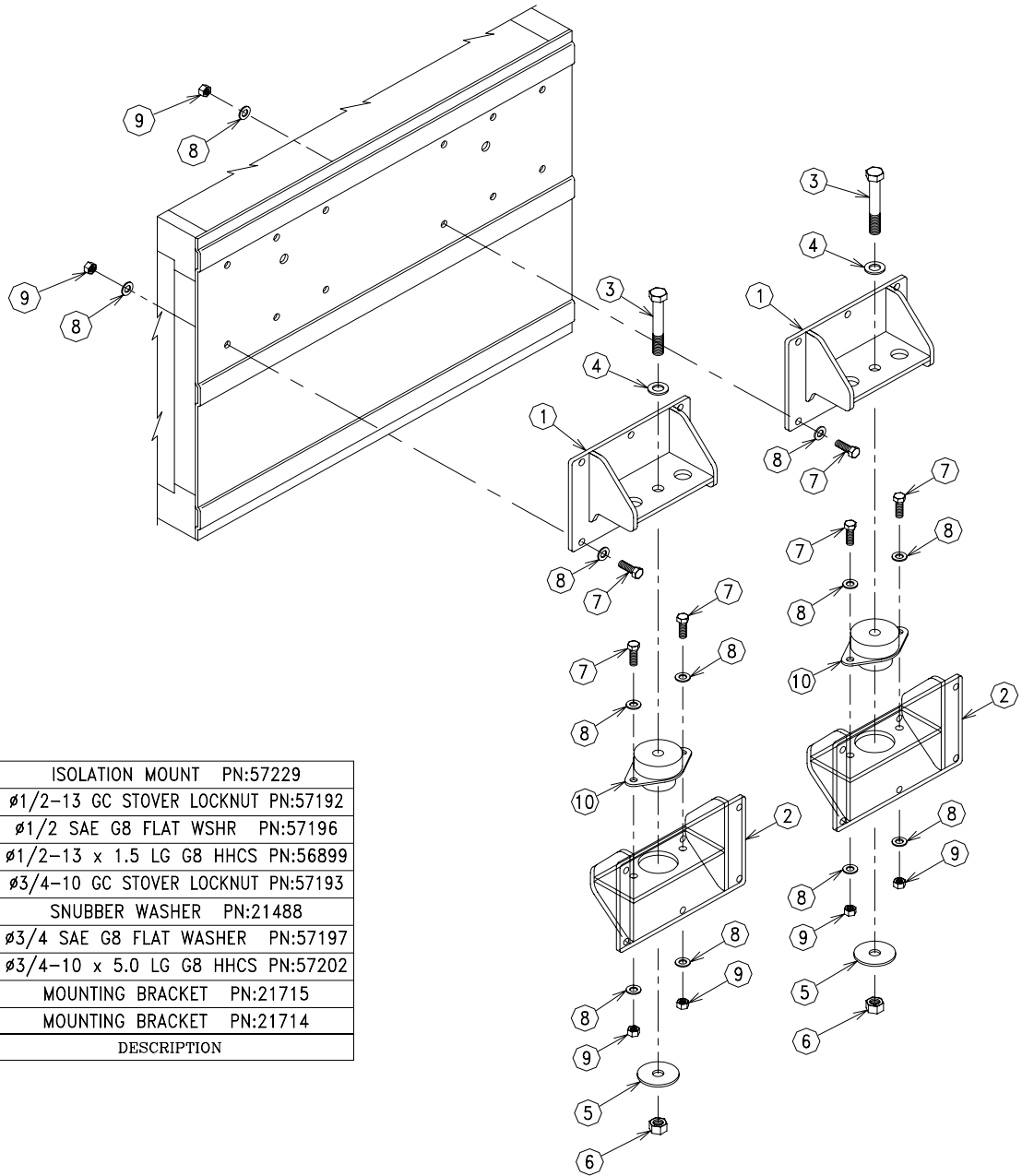
NOTE:

1. MOUNTING HOLES FOR ITEM #1 BRACKETS ARE FACTORY INSTALLED.
2. FOR INSTALLATION INSTRUCTIONS SEE OPERATORS INSTALLATION MODELS.
3. FOR SPECIFIC UNIT DIMENSIONS SEE SALES DRAWINGS.

KIT NO.	MODEL	DIMENSION (NOMINAL)			
		A	B	C	D
1498	5-62DA/HR62	94.25	83.00	3.00	32.00
1499	5-80DA	100.75	89.50	4.00	36.00
	5-110DA	102.25	91.00	3.00	34.00
1500	5-140DE	116.25	105.00	4.00	36.00
	5-150DA	116.25	105.00	3.00	38.00

Isolation Mounting Kit Figure 10.3.2

Figure 10.3.2 - Isolation Mounting Kit #1508 Parts Details (Drawing #12230B\_P1)



10	4	ISOLATION MOUNT PN:57229
9	32	Ø1/2-13 GC STOVER LOCKNUT PN:57192
8	64	Ø1/2 SAE G8 FLAT WSHR PN:57196
7	32	Ø1/2-13 x 1.5 LG G8 HHCS PN:56899
6	4	Ø3/4-10 GC STOVER LOCKNUT PN:57193
5	4	SNUBBER WASHER PN:21488
4	4	Ø3/4 SAE G8 FLAT WASHER PN:57197
3	4	Ø3/4-10 x 5.0 LG G8 HHCS PN:57202
2	4	MOUNTING BRACKET PN:21715
1	4	MOUNTING BRACKET PN:21714
ITEM	REQ'D	DESCRIPTION