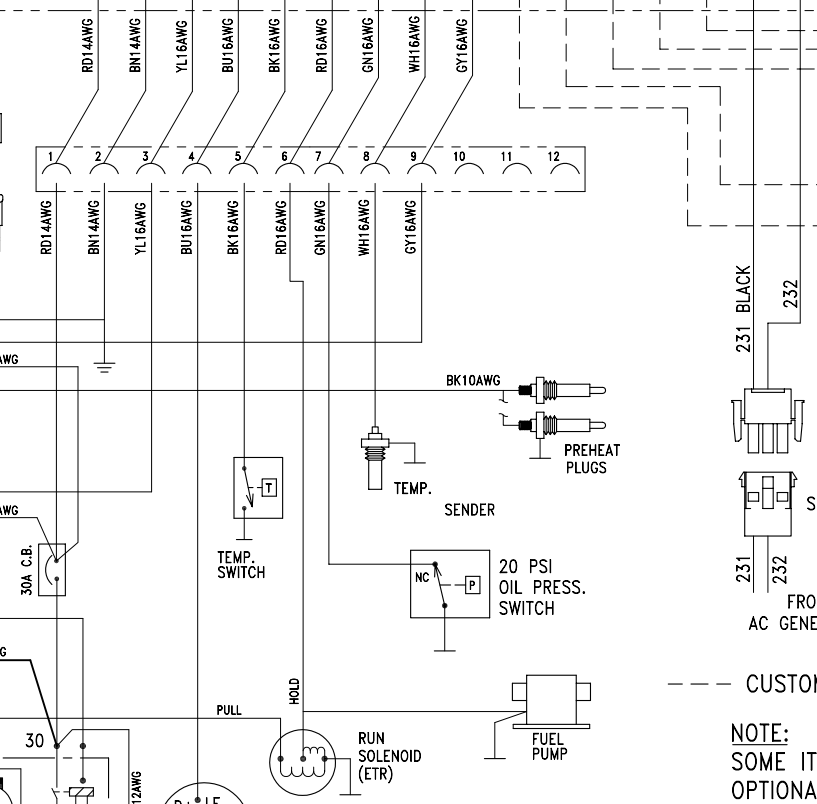
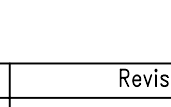
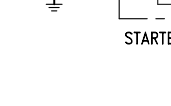
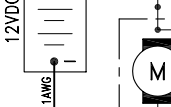
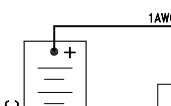
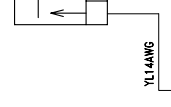
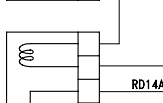
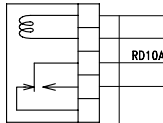
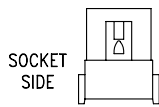
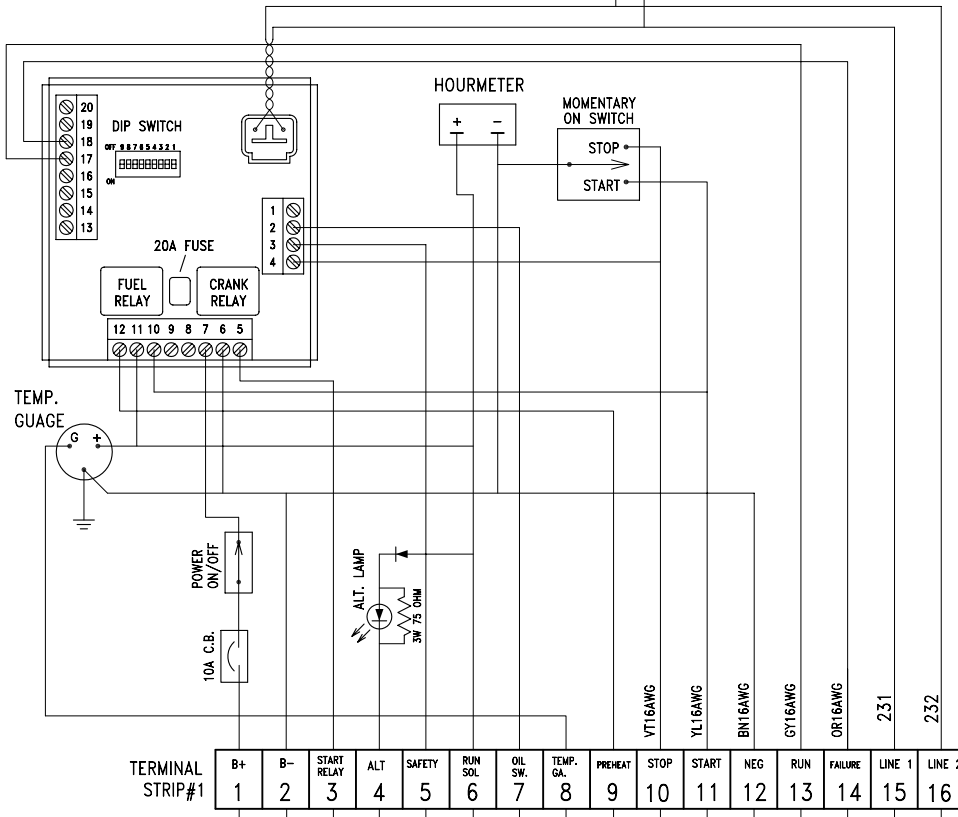


MAIN CONTROL PANEL
PN: 1556

AC VOLTMETER



--- CUSTOMER SUPPLIED WIRES

NOTE:
SOME ITEMS SHOWN ARE
OPTIONAL EQUIPMENT.

TITLE: 12VDC WIRING DIAGRAM, ALC CONTROL SYSTEM

THE FOLLOWING TOLERANCES APPLY
UNLESS OTHERWISE SPECIFIED:
ALL DIMENSIONS ARE INCH [mm]
DECIMALS .X ± .060 ANGLES ± 1°
.XX ± .030 FRACTIONS ± 1/32
.XXX ± .010
MACHINED SURFACES ARE 125√
DRILLED HOLES +.008 -.003
PUNCHED HOLES ±.016

STADCO
STAUFFER DIESEL INC
EPHRATA, PA., U.S.A. 17522
DRAWN BY: TJS SCALE: FULL DATE: 7/24/03
GROUP NO. ORDER NO. 1 OF 1 DRAWING NO. 12434D

D	Revised Plug Wiring	07/10/06	BKH
REV	DESCRIPTION	DATE	INT.